

The role of foregrounding in empathy and identification with story character, and stigma reduction of depression.

KEYWORDS: Foregrounding processing; empathy; identification; stigmatization; depression; shared reading

Study 1: The Role of **Processing Foregrounding** in **Empathic Reactions** in Literary Reading



Read the article online

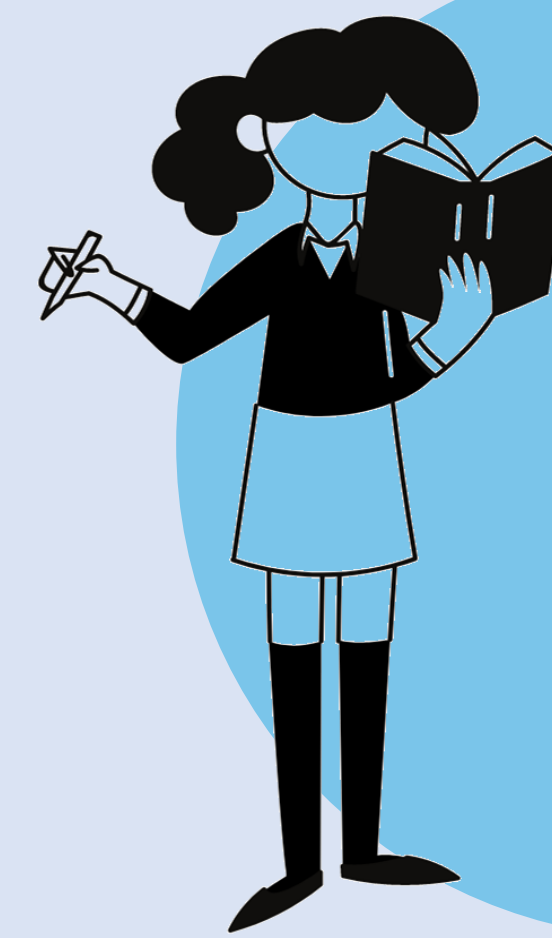


Readers **process foregrounding** in **different** ways

Empathy and Identification Scale (EIS) Revision and validation of Cohen (2001)

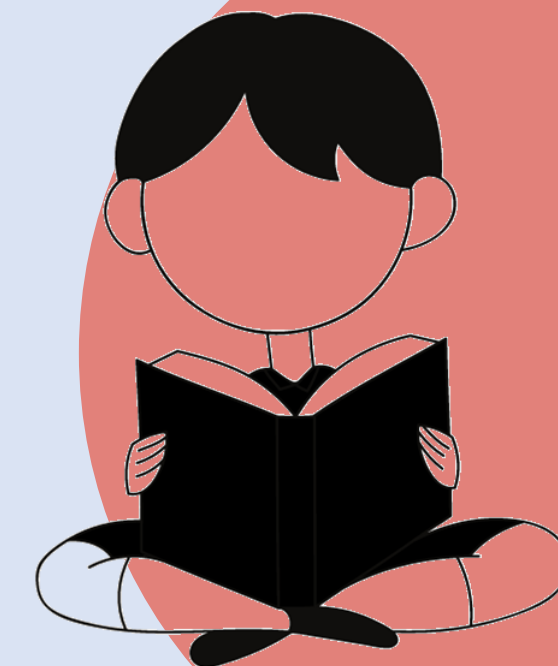
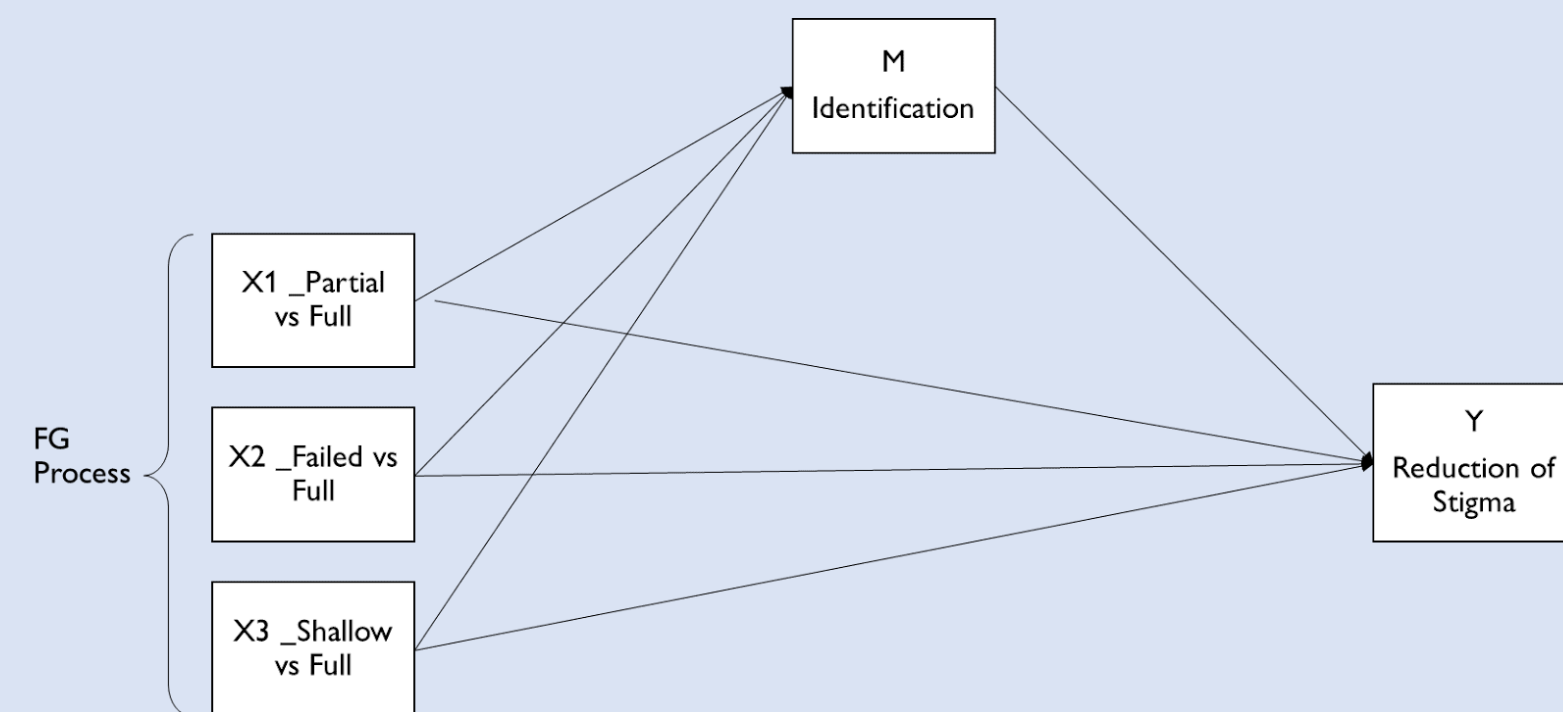
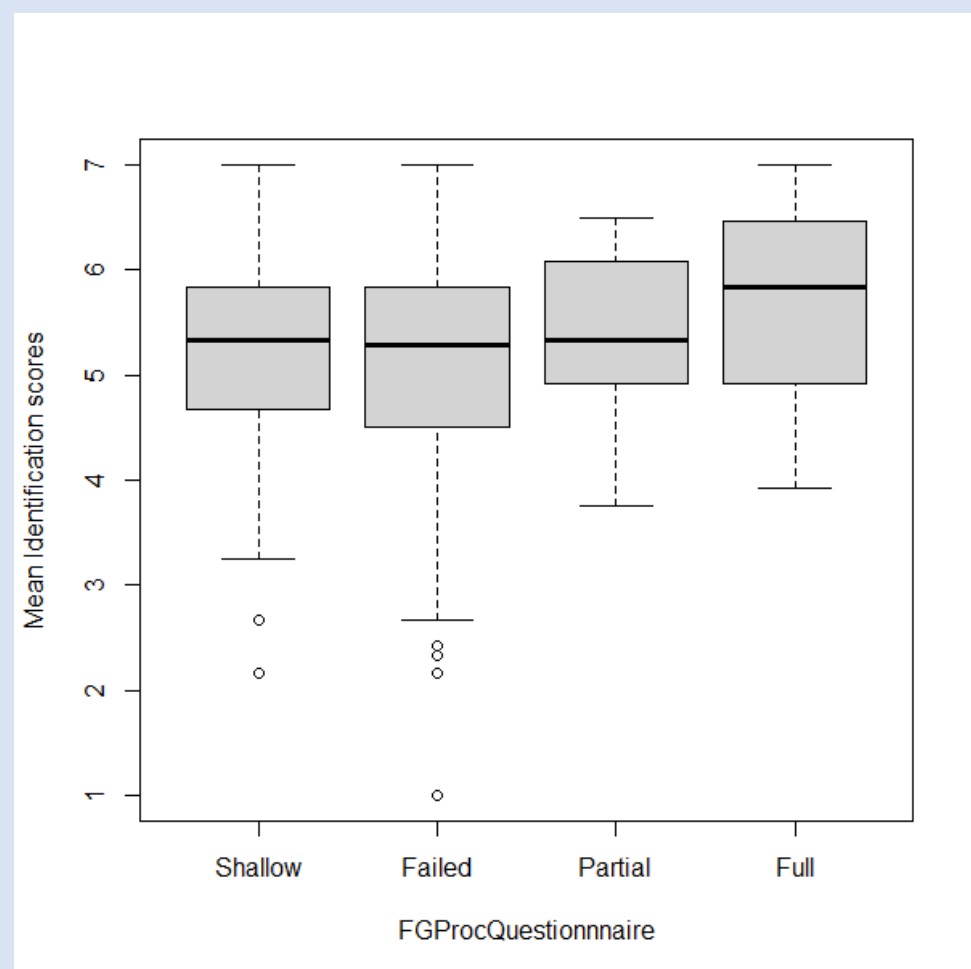


Preview the scale



There is a relationship between **the depth of foregrounding processing** and **empathy & identification** with the story character

Study 2: The Influence of Readers' **Foregrounding Processing** on **Empathy, Identification, Prosocial Behaviour** and **Stigma**



The more the readers **empathise & identify** with the story character, the better their **attitude** towards the **group the character represents**.



Paper in preparation



Is it possible to **stimulate deeper foregrounding processing?**
(still to be tested)

Study 3: **Manipulating Foregrounding Processing** using **Shared Reading** inspired prompts



Data collection in progress

